

# DentSim by Image Navigation

## Augmented Reality Dental Simulation

**The World's Leading Dental Simulator, is now even better than ever.** Only DentSim, with its patented augmented reality solution, allows for physical typodont training while getting real-time feedback on the DentSim workstation. This provides students up to 10x more feedback per hour, helping them progress faster, learning key hand-skills and developing the mental imagery they need to excel as dental students and dental practitioners. DentSim allows instructors to focus on the students who really need the help.

Best of all, with its open architecture, DentSim integrates seamlessly into your existing lab. DentSim can be used with virtually any mannequin. And with its small footprint, it hardly takes up any additional space.

**Now, DentSim v 5.0 enhances the platform to make it even easier to use.**



### Get up and running faster with auto-calibration

With the new auto-calibration feature you can now set up your lab in just minutes. The system comes pre-set with all the settings needed for hundreds of procedures, allowing you to spend more time teaching and less time setting up. In addition, the pre-set calibration guarantees a higher degree of accuracy on the procedures.

### Stay up and running longer

Integrated into the DentSim V.5 is the new remote access tool that provides quicker diagnostics and troubleshooting capabilities. This allows for quicker resolutions of issues and keeps the system current with the latest upgrades.

### More features = More applications

The all new camera provides a greater field of vision, allowing for greater accuracy and more procedures. It reduces many of the limitations from previous generations, supporting some more complex procedures. As a result, DentSim can be used from D1 through D4 students, providing a greater ROI.

**DentSim lets you ensure your students the best possible dental education, helping them become better dentists.**

- **Over 400 units sold to dental schools worldwide**
- **Over 8,500 dental students** have trained on DentSim equipment
- **DentSim students have logged in over 140,000 hours of training**

“

*Students can learn in two hours what used to take six hours on bench top. They develop the skills to learn operative dentistry.”*

**- Dr. Frank Robertello**  
Associate Professor, VCU

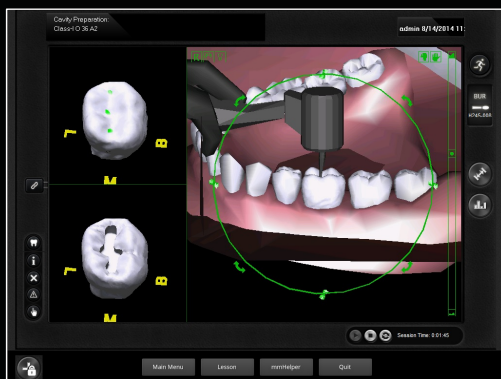
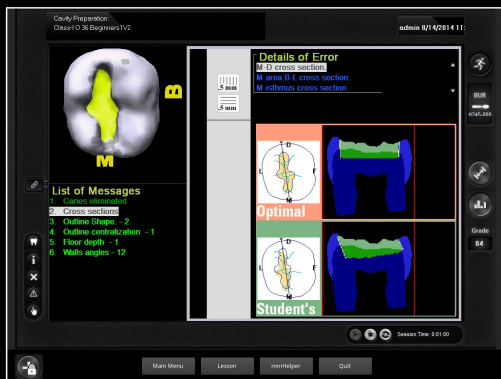
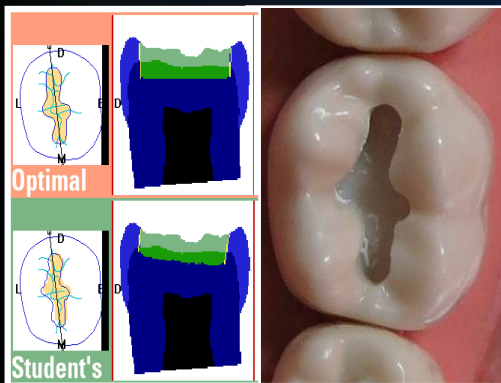
To learn more, visit our website at [www.image-navigation.com](http://www.image-navigation.com),  
Contact us at: [info@image-navigation.com](mailto:info@image-navigation.com); [info@dentsimlab.com](mailto:info@dentsimlab.com) or call: 1-646-741-2103 x702

DENTSIM BY IMAGE NAVIGATION...AUGMENTED REALITY DENTAL SIMULATION

# DentSim by Image Navigation

## FEATURES

- ▶ **NEW** Plug and Play
- ▶ **NEW** Remote service
- ▶ Instant Feedback
- ▶ Skills for any prep
- ▶ Physical typodont training
- ▶ Open Architecture



## BENEFITS

**Maximize your ROI** – and build enrollments

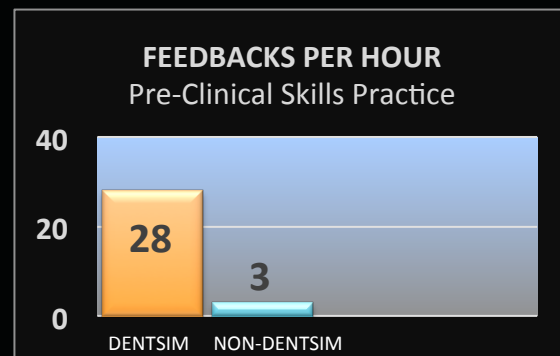
**Increases Productivity** – supports 20-30 evaluations per hour

**Increases Precision and Accuracy**

**Provides Mental Imagery** essential for hand-skill development

**Clinical Fidelity**– similar to working on a real patient

**Integrates easily** with existing infrastructures



“I need to start perpendicular to the occlusal table which is hard to see on the typodont but can be seen really nicely on DentSim.” - DentSim Student

To learn more, visit our website at [www.image-navigation.com](http://www.image-navigation.com),  
Contact us at: [info@image-navigation.com](mailto:info@image-navigation.com); [info@dentsimlab.com](mailto:info@dentsimlab.com) or call: 1-646-741-2103 x702